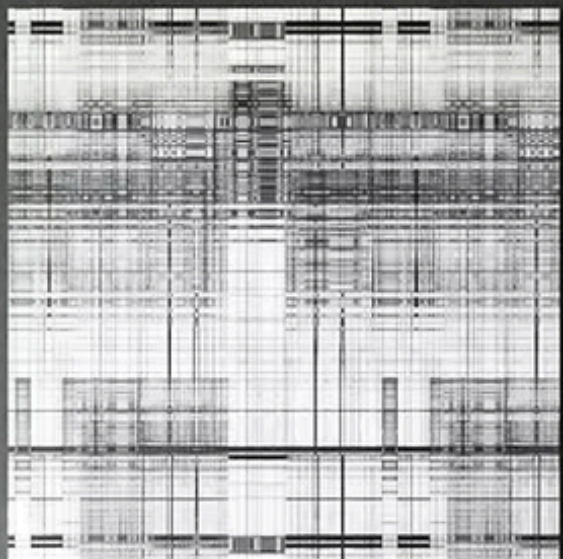




**LUX**  
FLOORING



# **LUX LAMINATE FLOORING - HERRINGBONE INSTALLATION GUIDELINES UNILOCK AB SYSTEM**

**Residential and Commercial Use**

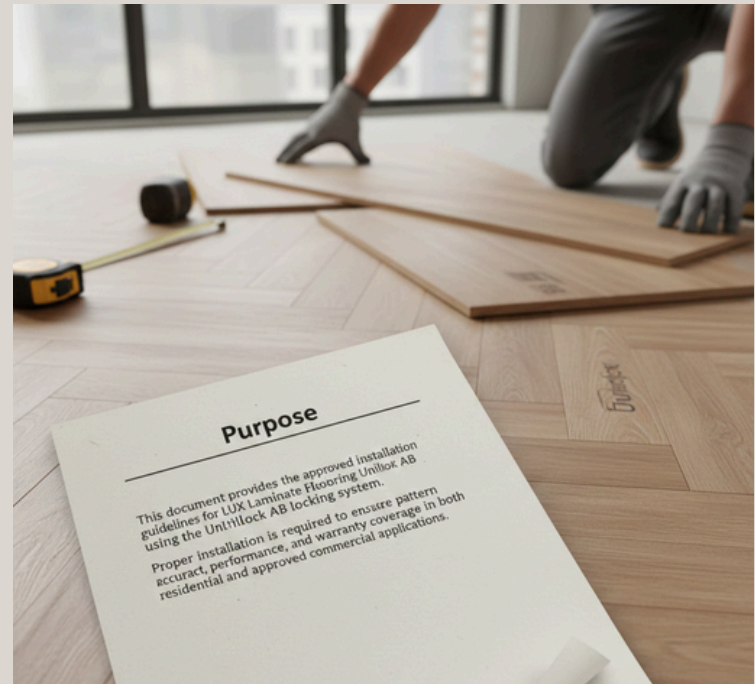
**Contact Us:**

[questions@luxflooring.com](mailto:questions@luxflooring.com)

[LUXFlooring.com](http://LUXFlooring.com)

## Purpose

This document provides the approved installation guidelines for LUX Laminate Herringbone flooring using the Unilock AB locking system. Proper installation is required to ensure pattern accuracy, product performance, and warranty coverage in both residential and approved commercial applications.



## 1. Product Overview

- Flooring thickness 12 mm total (10 mm core plus 2 mm attached pad)
- Floating installation system only
- Unilock AB locking system using alternating A and B panels
- Approved for residential and approved commercial use
- Installation over approved subfloors only
- Additional pad or underlayment up to 2 mm total thickness is approved where required

### Important:

- Additional pad beyond 2 mm total thickness is not recommended and may result in excessive movement or locking failure.





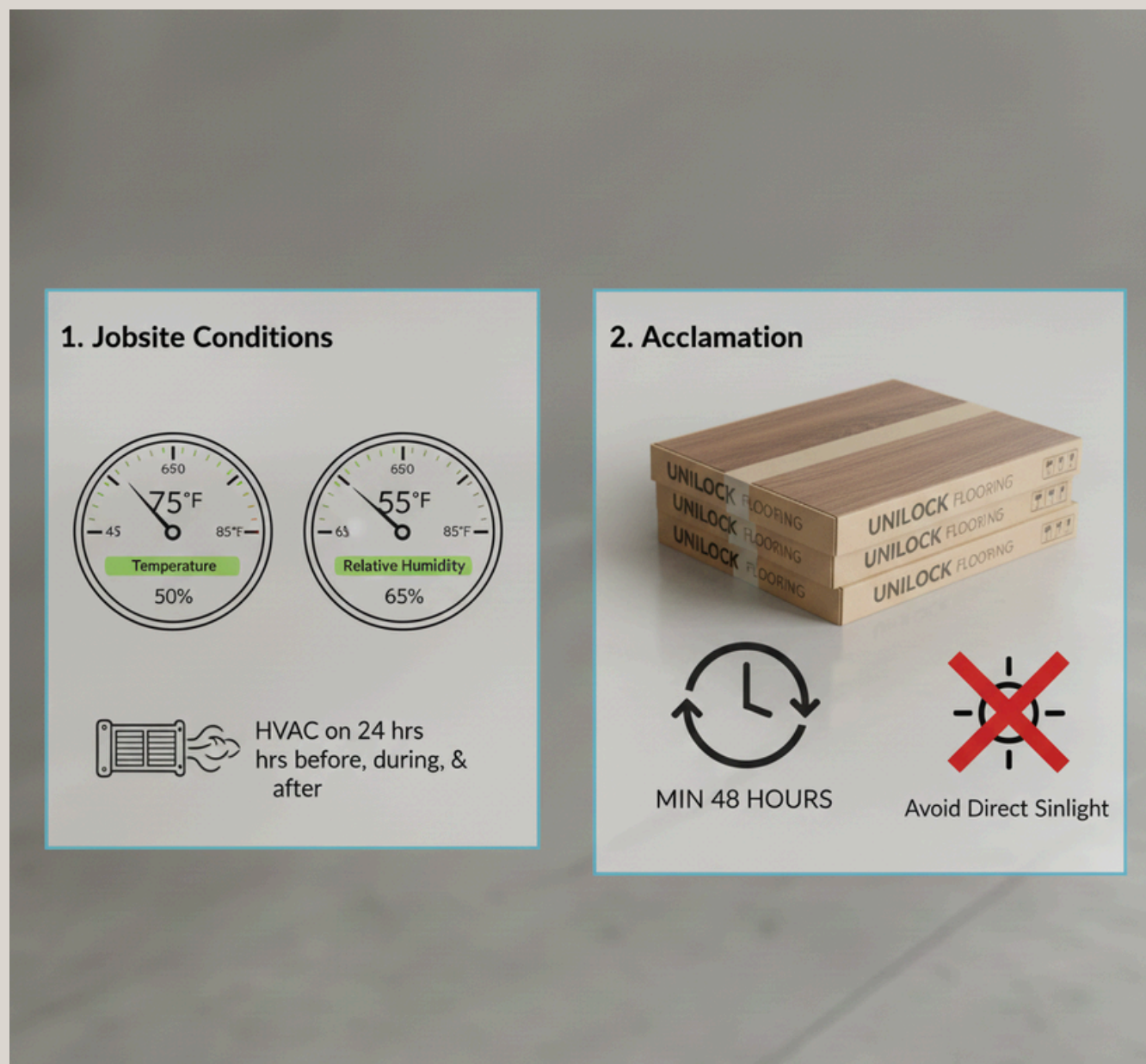
## 2. Jobsite Conditions and Acclimation

### Environmental Conditions

- Temperature must be maintained between 65°F and 85°F
- Relative humidity must remain between 35% and 65%
- HVAC systems must be operating at least 24 hours before, during, and after installation

### Acclimation

- Store flooring flat in unopened cartons
- Acclimate a minimum of 48 hours in the installation area
- Avoid direct sunlight exposure during acclimation



### 3. Approved and Unapproved Subfloors

#### Approved Subfloors

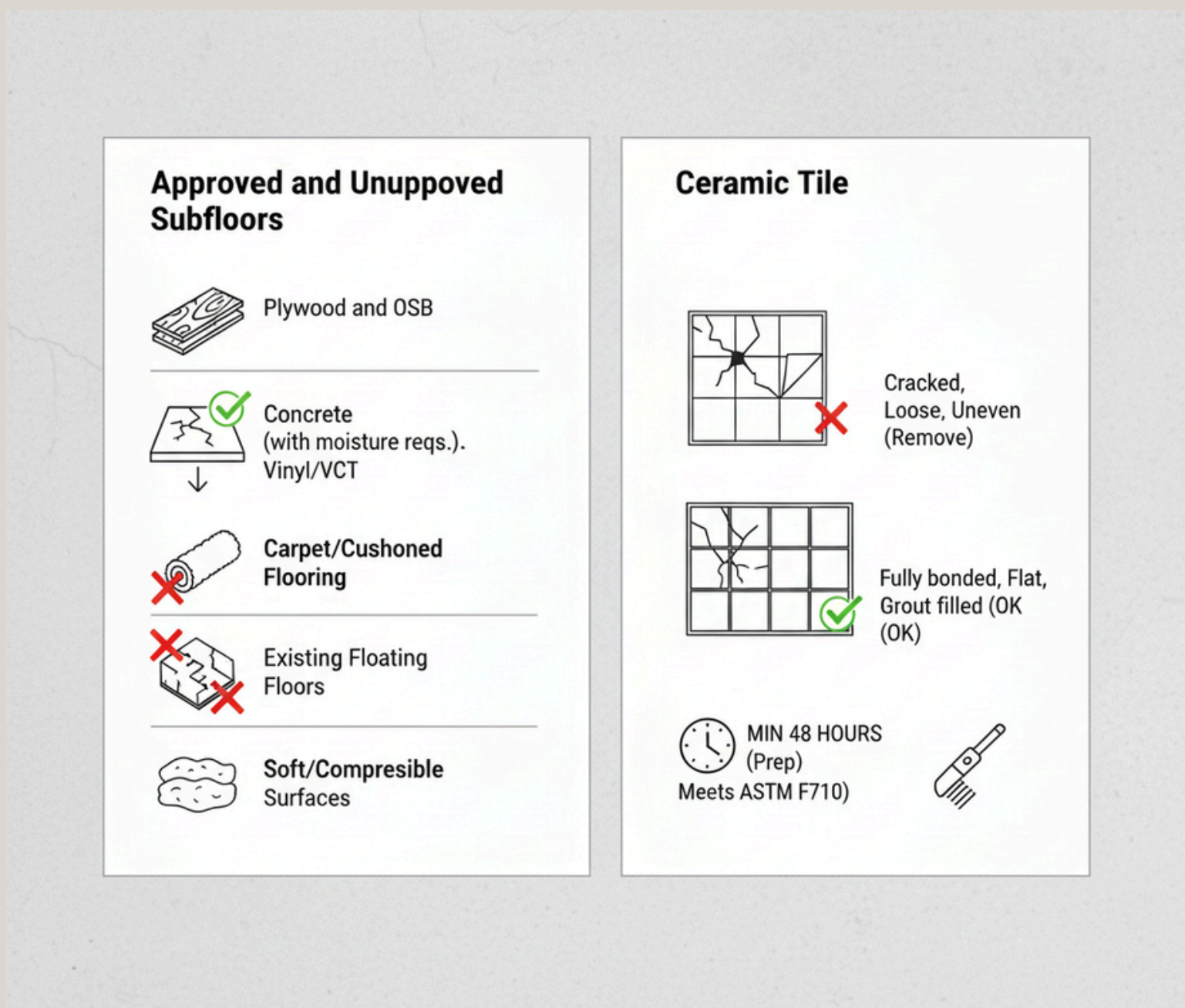
- Plywood and OSB installed to ASTM F1482
- Concrete subfloors meeting moisture requirements
- Existing vinyl or VCT that is fully adhered, clean, flat, and stable

#### Unapproved Subfloors

- Carpet or cushioned flooring
- Existing floating floors
- Soft or compressible surfaces

#### Ceramic Tile

Ceramic tile may remain in place only if it is fully bonded, flat, grout lines are filled, and surface preparation meets ASTM F710. Any cracked, loose, or uneven tile must be removed.



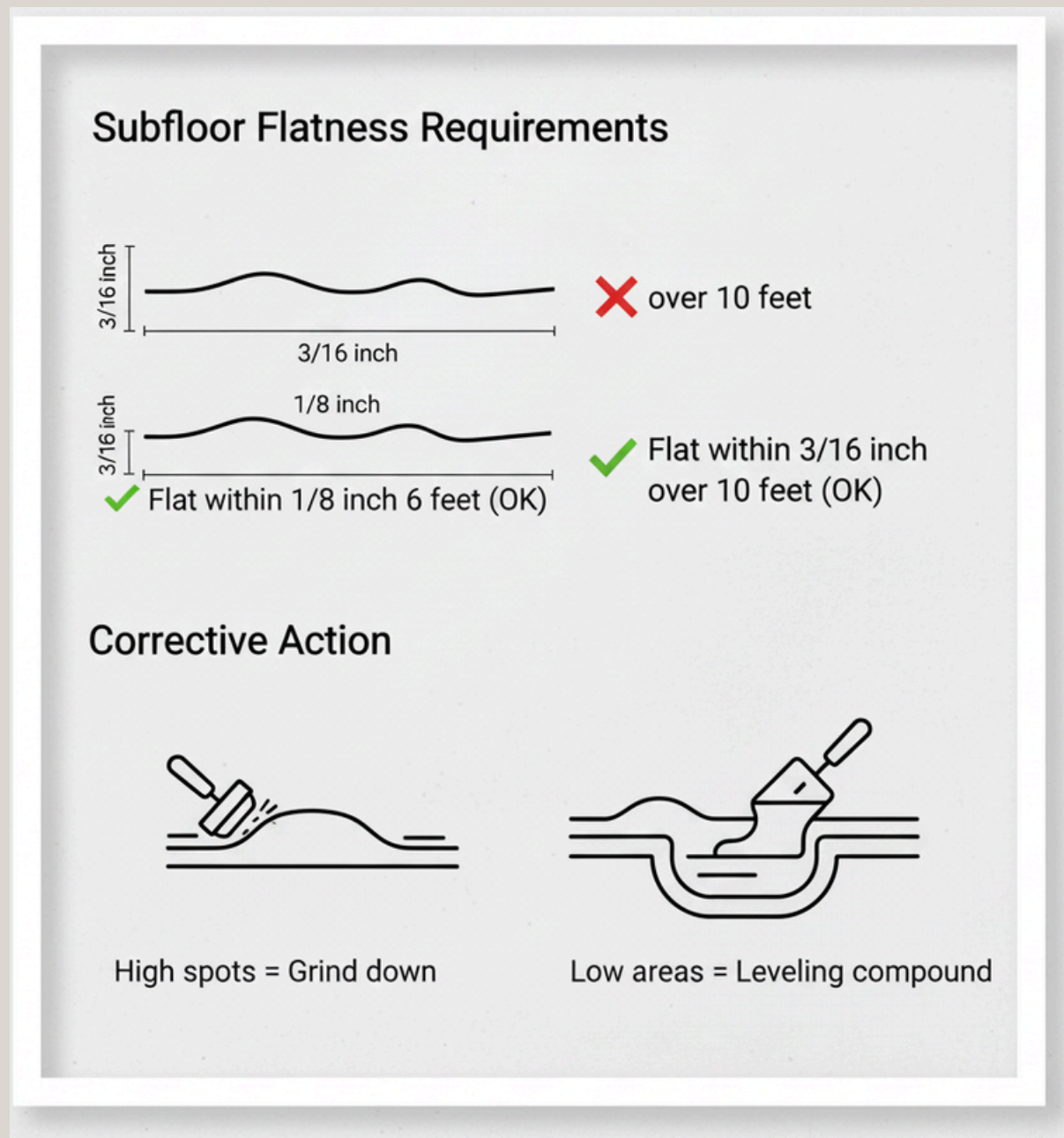


#### 4. Subfloor Flatness Requirements

Subfloors must be flat within:

- 3/16 inch over 10 feet
- 1/8 inch over 6 feet

High spots must be ground down. Low areas must be filled using an appropriate leveling compound.



## 5. Moisture and Moisture Barrier Requirements

### Concrete Subfloors

Moisture testing is required prior to installation.

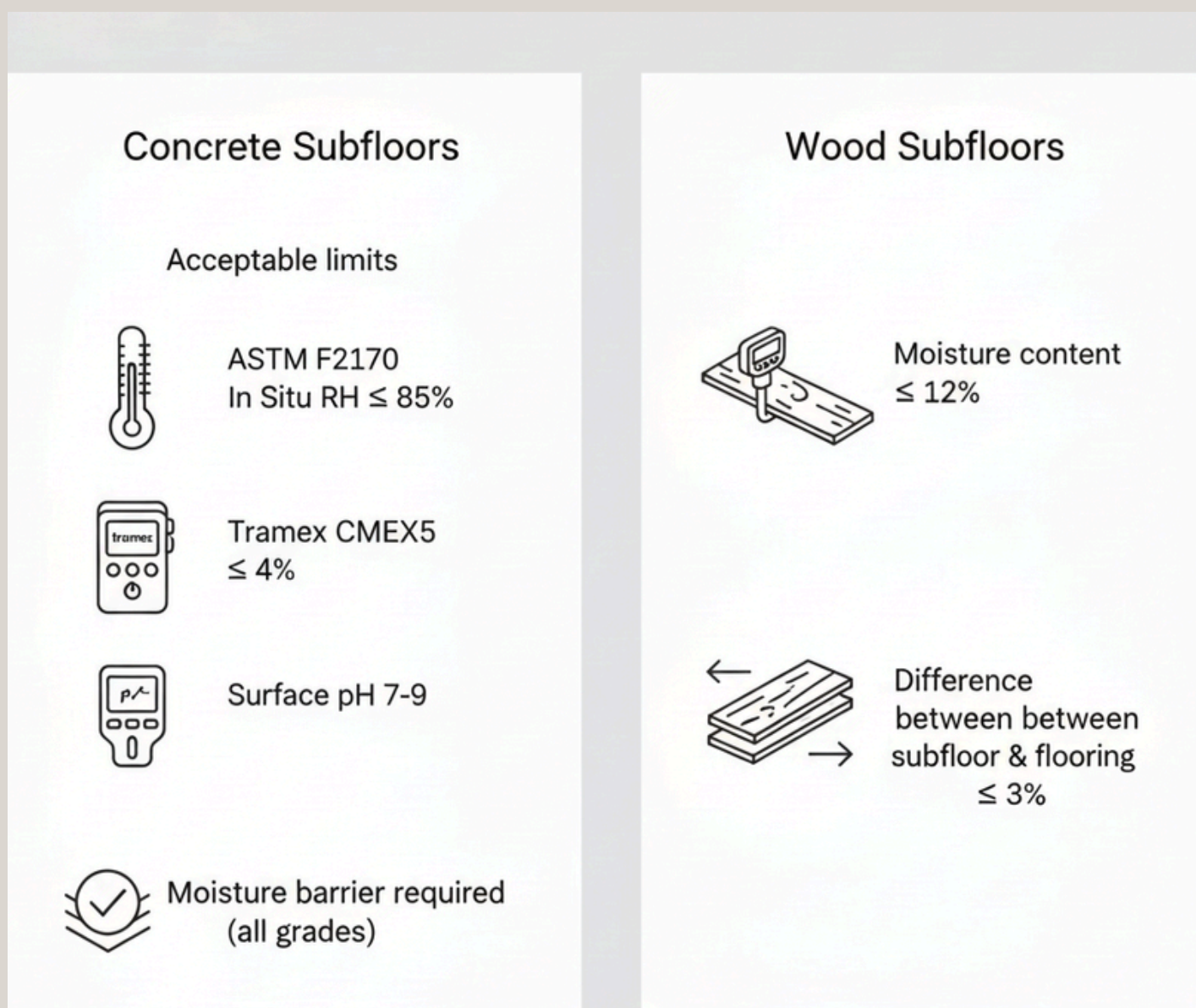
Acceptable limits:

- ASTM F2170 In Situ RH testing  $\leq 85\%$
- Tramex CMEX5 moisture meter  $\leq 4\%$
- Surface pH between 7 and 9

A moisture barrier is required on concrete installations regardless of grade level.

### Wood Subfloors

- Moisture content must not exceed 12%
- Difference between subfloor and flooring must not exceed 3%





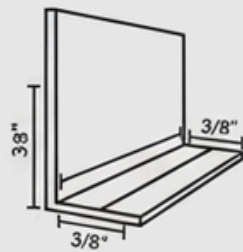
## 6. Expansion Gap Requirements

A minimum expansion gap of 3/8 inch is required at:

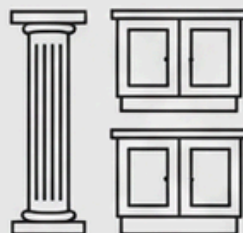
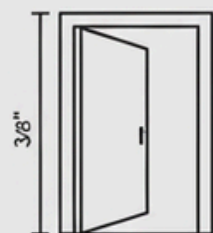
- All walls
- Door frames
- Fixed vertical obstructions
- Columns and cabinets

Trims and moldings must not be fastened through the flooring.

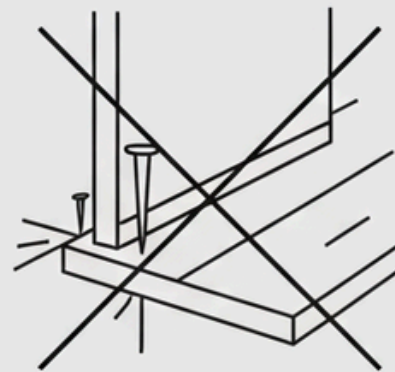
### 3/8 inch Gap Required At:



- All walls
- Door frames



- Fixed vertical obstructions, Columns and cabinets



### Important:

Trims and moldings must not be fastened through the flooring.

## 7. Layout and Pattern Planning

### A and B Panels

- A panels and B panels must be alternated
- One A and one B panel form a V shape or triangle
- This triangle setup is the standard herringbone starting method

### Layout Options

#### Option 1 Triangle Method

Start from a snapped center line and build outward using A and B triangles.

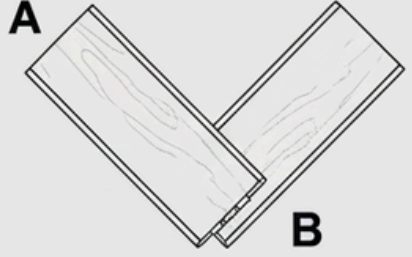
#### Option 2 Perimeter First Method

Install perimeter boards parallel to walls while maintaining expansion, then build the triangle pattern inward. Alignment must remain true to center lines.

Both methods are acceptable when expansion and alignment are maintained.

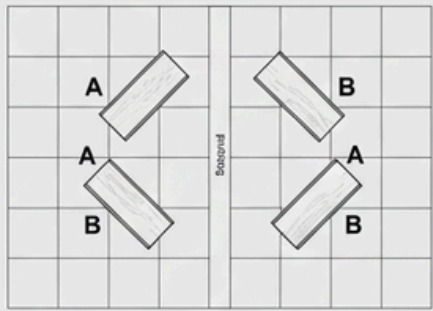
### Layout and Pattern Planning

#### A and B Panels

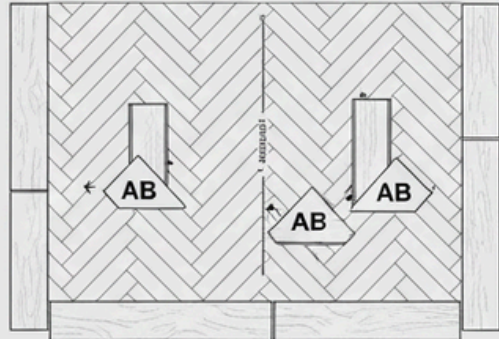


- A panels and B panels must be alternated
- One A and one B panel form a V shape or triangle
- This triangle setup is the standard herringbone starting method

#### Layout Options



#### Option 2 Perimeter First Method

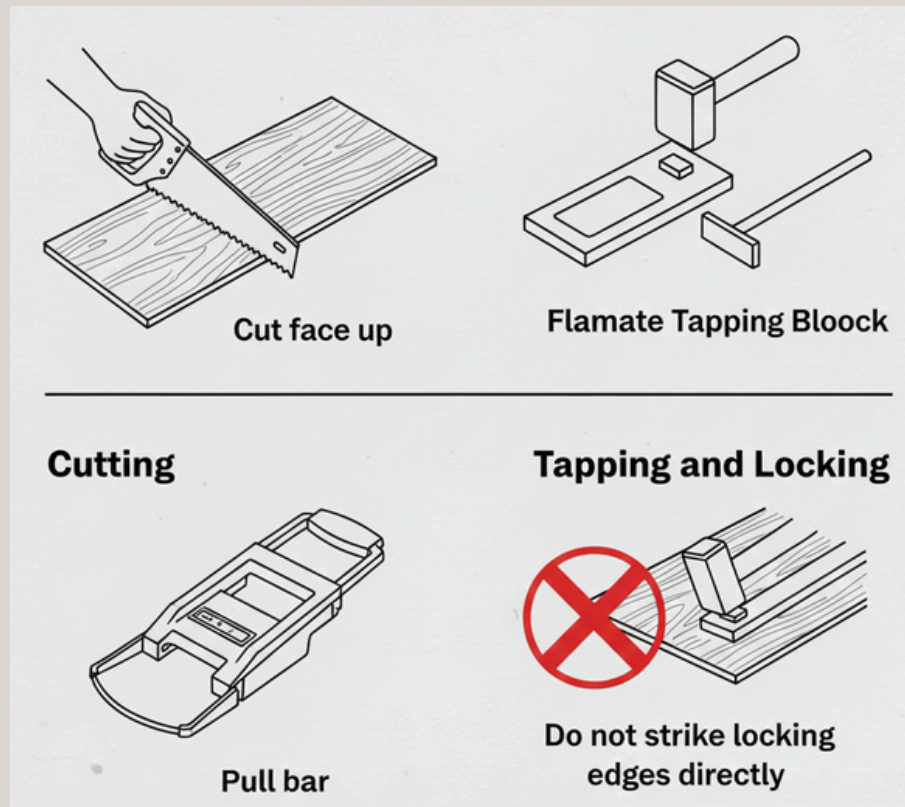


Both methods are acceptable when expansion and alignment are maintained.



## 8. Cutting and Tools

- Cut face up using fine tooth saw or laminate cutter
- Use tapping block and pull bar approved for laminate
- Do not strike locking edges directly

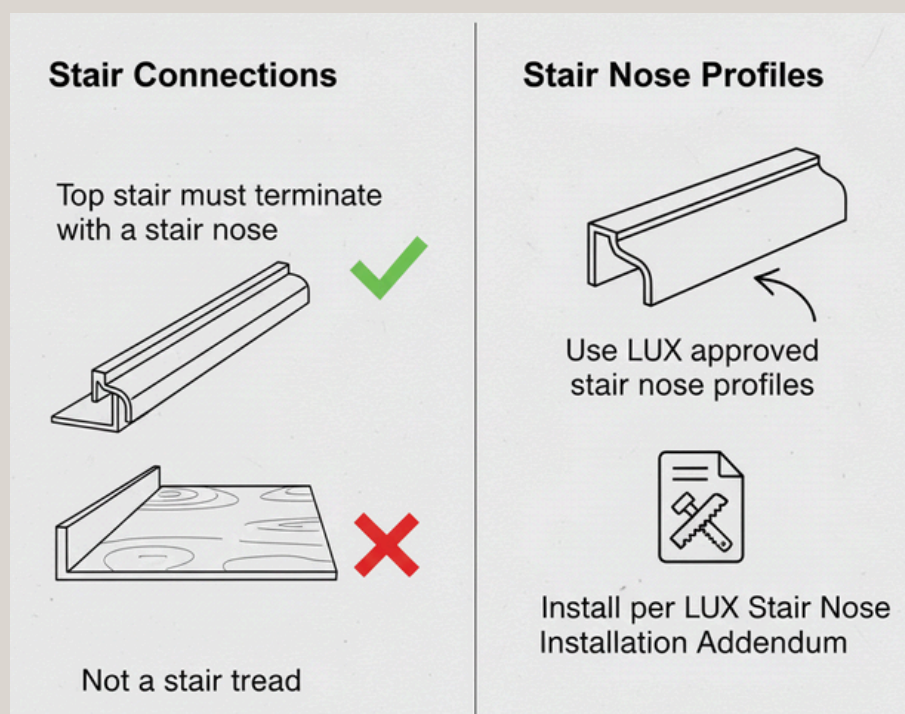


## 9. Transitions and Stair Connections

Top stair must terminate with a stair nose, not a stair tread

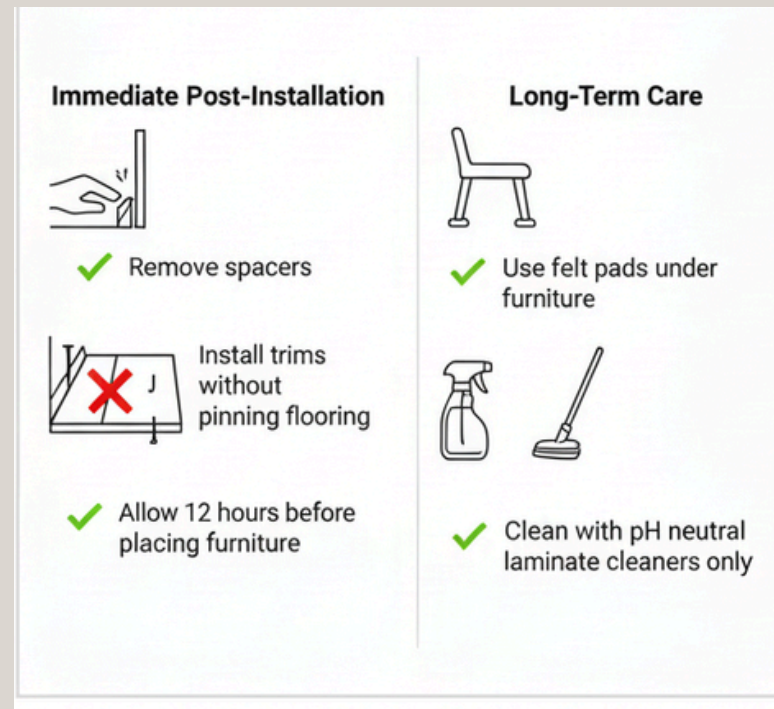
Use LUX approved stair nose profiles

Install per LUX Stair Nose Installation Addendum



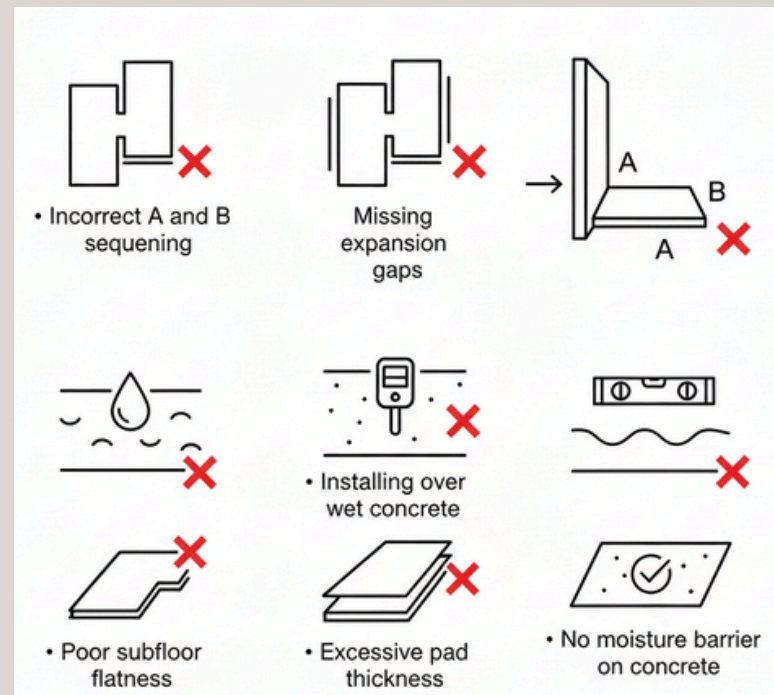
## 10. Post Installation Guidelines

- Remove spacers
- Install trims without pinning flooring
- Allow 12 hours before placing furniture
- Use felt pads under furniture
- Clean with pH neutral laminate cleaners only



## 11. Common Installer Errors

- Incorrect A and B sequencing
- Missing expansion gaps
- Installing over wet concrete
- Poor subfloor flatness
- Excessive pad thickness
- No moisture barrier on concrete



## 12. Reference Standards

- ASTM F710 Subfloor preparation
- ASTM F1482 Wood subfloor standards
- ASTM F2170 RH testing
- ASTM F1869 MVER testing
- RFCI laminate flooring practices

