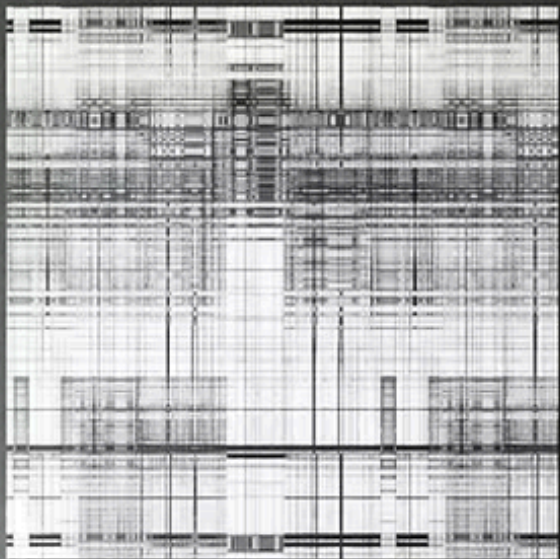




LUX
FLOORING



INSTALLATION GUIDE: LUX STAIR NOSE INSTALLATION ADDENDUM

[Learn More](#)



Contact Us:

orderdesk@luxflooring.com

[LUXFlooring.com](https://luxflooring.com)

This addendum provides installation instructions for LUX Stair Nose and Stair Tread products. Following these guidelines will help ensure proper fit, safe performance, and long-term durability.

1. Product Overview

- LUX offers three types of stair nose profiles. Each one has a specific purpose:
 - Flush Stair Nose
- Creates a smooth, clean edge on steps. Best for stairs using WPC treads where a seamless transition is wanted.
 - Overlap Stair Nose
- Used when the flooring is a floating system and needs room for expansion. Provides a finished edge without restricting movement.
 - Square Stair Nose (SPC-Based)
- Made from SPC core. Provides a modern, squared front edge. Used on SPC stair systems and landings where a straight, contemporary look is required.

FLUSH STAIR NOSE

7' feet 10.4" inches in length, made of WPC



OVERLAP STAIR NOSE

***Not available at our New Jersey Warehouse

94-1/2" x 2-1/4 x 5/8", made of WPC



SQUARE FLUSH STAIR NOSE

Glenn Manor Square Stair Nose - 48"x 4.5"x 2", made of SPC

Royal Oaks Square Stair Nose - 60" x 4.5" x 2", made of SPC

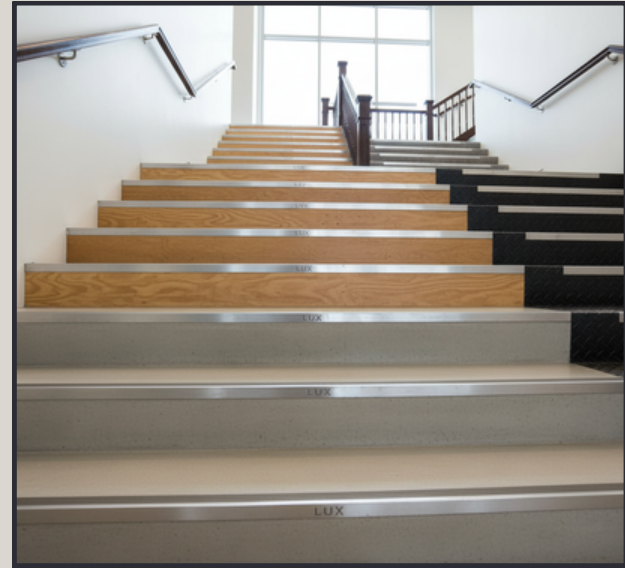
Pacific Acres Square Stair Nose - 48"x 5"x 2", made of SPC

Regal Heights Square Stair Nose - 60" x 5" x 2", made of SPC



2. Approved Staircase Types

- LUX stair noses may be installed on the following staircase structures:
 - Plywood stairs
 - OSB stairs
 - Concrete stairs
 - Metal stairs
 - Both residential and commercial staircase types



3. Substrate Preparation

- The stair surface (the tread) must be properly prepared before installation:
 - Surface must be clean, dry, solid, and level
 - Remove all dust, paint, construction debris, and old adhesives
 - Repair loose or squeaking steps
 - Fill gaps or cracks as needed
 - The surface must follow the basic preparation rules of ASTM F710



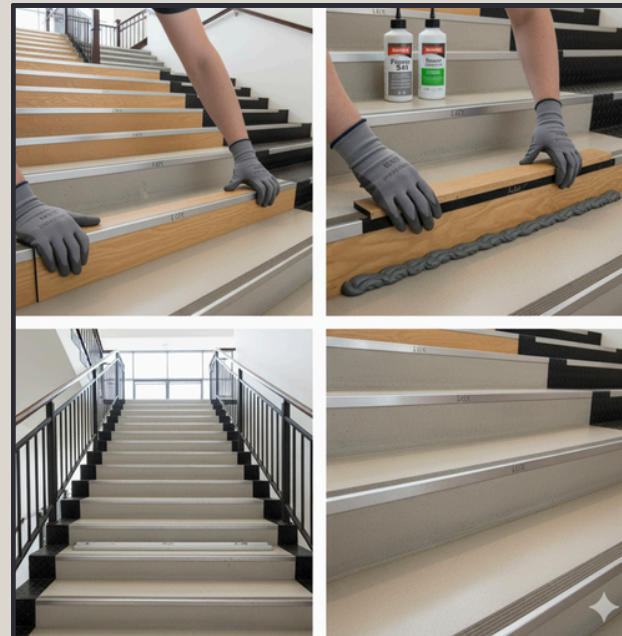
4. SPC Stair Nose Pad Removal

- Square SPC Stair Noses include an attached acoustic pad.
- This pad must only be removed on the section that will contact the stair, so the glue bonds directly to SPC.
- Instruction:
 - Carefully remove the pad in the bonding area using a utility knife.
 - The glue must never be applied on the pad.



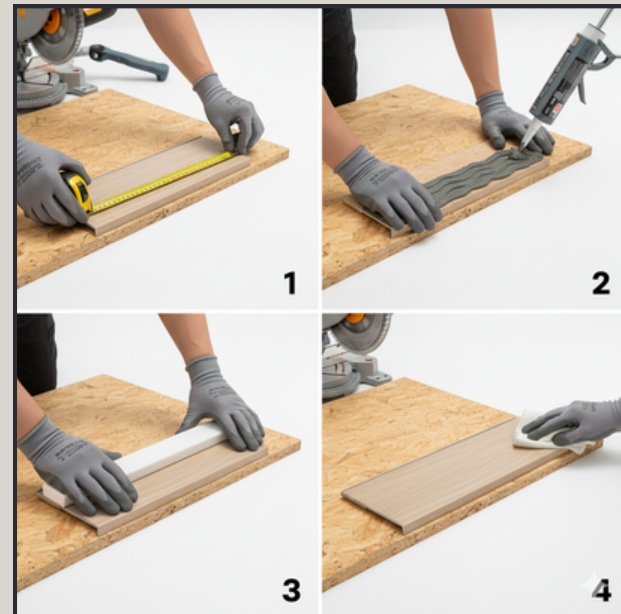
5. Adhesive Application Guidelines

- Use a high-strength adhesive suitable for stair applications.
- Preferred Adhesive:
 - LUX Firm Set Transitional Adhesive (recommended by LUX)
- Approved Alternates:
 - Roberts 1407
 - Roberts 7200
 - Bostik GreenForce
- Application Rules:
 - 1. Apply adhesive evenly along the stair tread and the back of the stair nose.
 - 2. Press stair nose firmly into place.
 - 3. Maintain full contact across the entire length.
 - 4. Wipe away extra adhesive immediately.



6. Installation Procedure:

- Dry Fit
 - Measure and cut each stair nose to the correct width. Test-fit before gluing.
- Apply Adhesive
 - Follow adhesive instructions for spread, open time, and pressure.
- Position & Press
 - Press the stair nose firmly into the adhesive. Make sure it sits flat with no gaps.
- Optional Fastening
 - For wood stairs or heavy-traffic areas, 1–2 finish nails may be added at the front edge. Fill nail holes with color-matched putty.
- Clean Up
 - Remove wet adhesive immediately with a damp cloth.



7. Stair Nose Return Installation

- For open stair sides, use the Stair Nose Return piece to create a clean, finished edge on the side of the step.
- Cut and glue the return piece so it meets the front nose cleanly.



8. Moisture Guidelines

- Stairs must be completely dry before installation.
- Do not install stair parts over damp or wet surfaces.
- Concrete stairs must follow basic moisture preparation rules.
- Tramex meter readings for concrete should not exceed 4%.



9. Safety & Maintenance

- Keep indoor temperature between 65–85°F.
- Avoid dragging furniture or heavy items across the stair noses.
- Clean using pH-neutral cleaners only.
- Do not use steam mops or harsh chemicals.
- Keep stairs dry at all times.



10. Top Step Requirement

- The top stair must always use a Stair Nose, not a stair tread.

11. Warranty Note

- Proper installation of all LUX Stair Nosing products is required for warranty coverage.
 - For warranty questions, contact: questions@luxflooring.com

